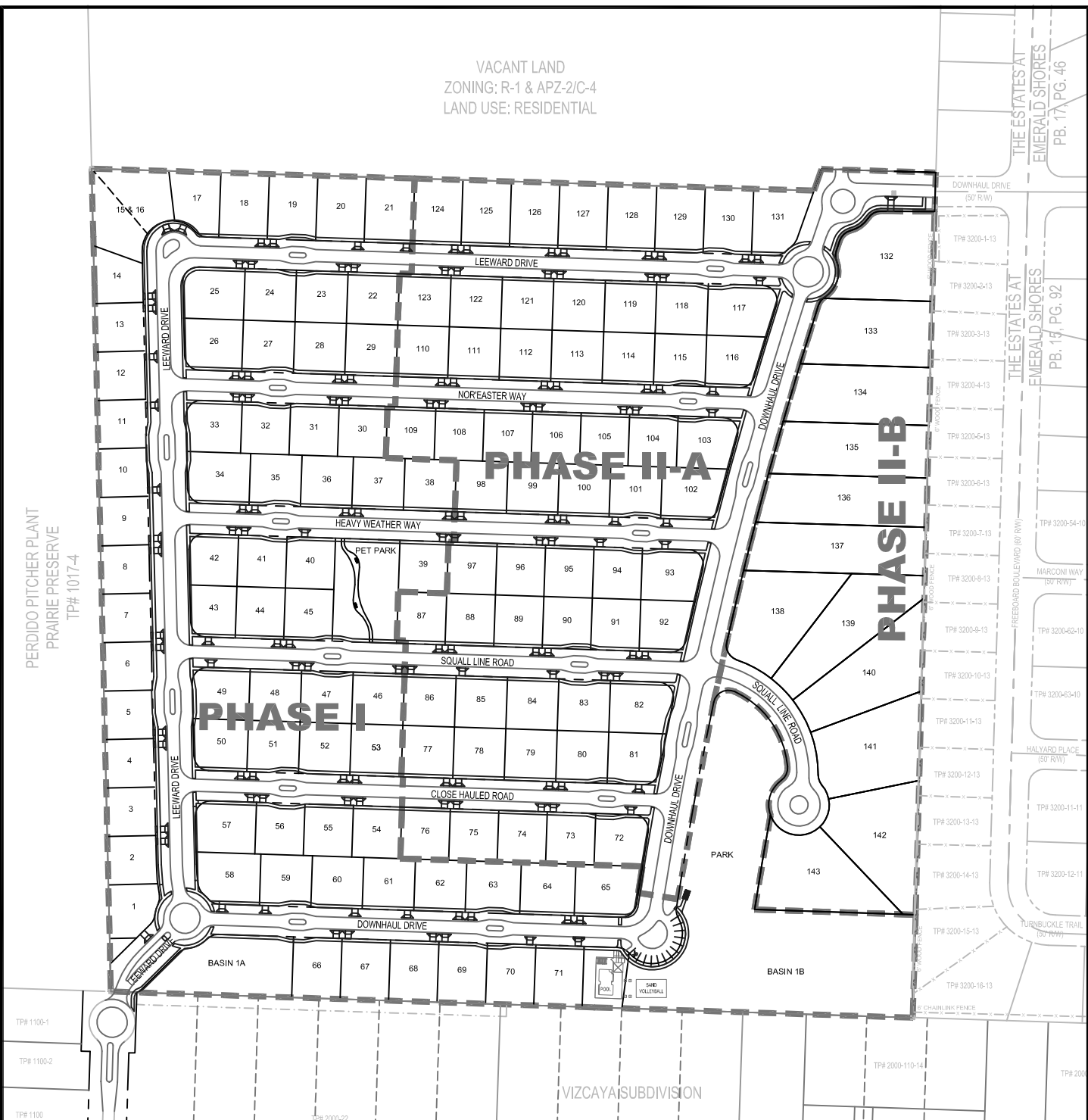


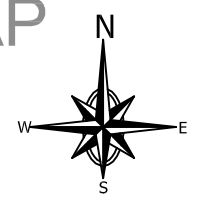
VACANT LAND
 ZONING: R-1 & APZ-2/C-4
 LAND USE: RESIDENTIAL



LEEWARD SUBDIVISION DRIVEWAY LOCATION MAP

NOTES

1. DRIVEWAY LOCATIONS ARE PRE-DETERMINED TO MAXIMIZE SPACING BETWEEN DRIVEWAYS.
2. THE LOCATION OF UTILITY BOXES, I.E. PEDESTALS, TRANSFORMERS, ETCETERA IS ALSO PREDETERMINED, TYPICALLY BETWEEN ADJACENT DRIVEWAYS.
3. REFER TO THE TYPICAL DUAL DRIVEWAY CONFIGURATION DETAIL.
4. ANY PROPOSED CHANGE TO THE DRIVEWAY LOCATION REQUIRES PRIOR APPROVAL FROM THE HOMEOWNERS' ASSOCIATION.



SCALE: 1" = 240'
 JANUARY 14, 2015